



photos: ©2015 Jan Shergalis

Just north of Cincinnati, Ohio, Loveland Station is a newly-opened 40-unit senior apartment building with a mix of one- and two-bedroom apartments, all with one bath. Public spaces include a community room, warming kitchen, game room, laundry and fitness center. Loveland Station is conveniently located next to Loveland Bike Trail and only one block away from the Little Miami Scenic River.

"Loveland Senior Housing is a distinct project which exemplifies robust collaboration among all team players toward a common goal," says Jonathan Cana, Residential Studio Director.

THE "STATE" OF ARCHITECTURE

We're California Dreamin' in this issue of our newsletter.

For more than 20 years, RDL Architects has worked with Arhaus Furniture to design and develop approximately 65 stores throughout the country.

In 2015, we had the privilege to go coast-to-coast with Arhaus and have two stores under construction in California, with a potential for two additional stores in the coming year! We're excited about these west coast opportunities and the continued expansion of the Arhaus brand!



Rendering by Marko Lukowsky & Nora Hoxha

UPCOMING CONFERENCES

We hope you'll join us from **October 5-7** at the [2015 Multifamily Executive Conference](#) in Las Vegas, NV - the apartment industry's most valuable educational and networking conference. Be sure to check out the "On the Boards: The Next Generation of Architecture" session at 3:40 pm, where our own Gregory Soltis will be one of the 'starchitect' panelists.

From **November 1-4**, come find RDL Architects at the [Leading Age Annual Meeting and Expo](#) in Boston, MA. Please stop by and see us at Booth 1719.

BEHIND THE CURTAIN

Psst... look inside our progress at Country Meadows...



Located on the eastern edge of Pennsylvania in the Lehigh Valley area, near the New Jersey border, Country Meadows at Forks is currently being constructed on 21 acres of quiet, beautiful countryside. The 92,000 square foot community is expected to open in the summer of 2016 and will soon offer 30 independent living apartments, 34 assisted living and 25 memory care suites.



We wanted to offer a glimpse inside this 18-month long construction project and highlight **David Fellenstein**, RA, LEED AP, who is our project manager for this very exciting project.

Much of David's 23-year career has been dedicated to senior living design, with a wealth of healthcare design experience, including hospitals, skilled care nursing and assisted living facilities.

In addition to David's responsibilities for all day-to-day communications with the owner and the construction team, David is regularly on site meeting with the contractor to review construction progress, ensuring that the owner's original goals and visions become reality.

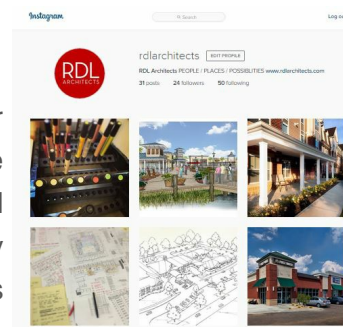


photo: ©2014 Jan Shergalis

For more information on Country Meadows at Forks, visit countrymeadows.com.

RDL ON INSTAGRAM

Last month, we got more social and launched our Instagram account. We've been having fun showcasing the People, Places and Possibilities our firm creates and develops. If you too are on Instagram (whether personally or professionally), we hope you will follow us at [@rdlarchitects](https://www.instagram.com/rdlarchitects).



CLIENT SHOUT-OUT

"We at Liberty Development Company strive to create alignments of interest or partnerships in our projects and with our customers. The team at RDL Architects share that same goal and business philosophy and have proven many times over to be creative and practical problem solvers. RDL's expertise and early involvement have been invaluable to us and have contributed directly to our obtaining several development projects and making them successful."

- Thomas J. Kuluris, President
[Liberty Development Company](http://LibertyDevelopmentCompany.com)

People / Places / Possibilities

RDLarchitects.com

16102 Chagrin Blvd., Suite 200 | Cleveland, Ohio 44120

p 216.752.4300 | f 216.752.4301