

Featured Project

MEMORIAL HOMES

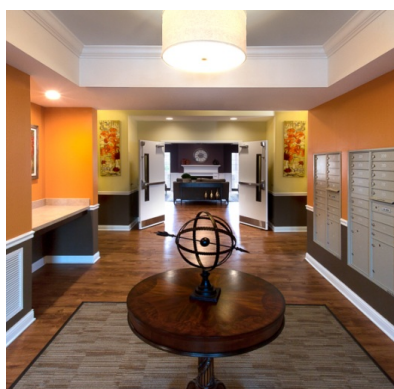
Williamsport, Pennsylvania



The birthplace of Little League Baseball, Williamsport is now home to Memorial Homes, a 40 unit three-story residential apartment building, complete with a community room and kitchen, computer room, laundry facilities, a library and game room.



Totaling close to 44,000 square feet, residents have the option to live in one of 22 one-bedroom or 18 two-bedroom apartments. Each of the apartment units meets fair housing and VisitAbility design criteria, including all doorways and passageways having a 36-inch wide door.



Jeff Eaton, President and CEO of Arbor Housing and Development, stated "We are pleased to be the managing partner in giving these residents a safe and affordable place to call home."

The inspiration of Memorial Homes was based on the progressive, yet traditional and colonial style of the town of Williamsport. The exterior stacked-ledged stone was based on the building's natural surroundings and environment to create a classic look and feel. The warm interior design selections were chosen to evoke an inviting and familiar, yet new sense of luxury living that make the spaces feel like home.

photos ©2015 [Jan Shergalis](#)

AROUND TOWN - PENNSYLVANIA

In this issue of our newsletter, we're focusing on our neighbor state of Pennsylvania. Since 2010, RDL Architects has completed more than 65 projects throughout the Keystone state! [Click here to tweet this statistic!](#)

So far this year, we have five projects in progress, including residential and mixed-use projects, and three tax-credit affordable housing projects we announced last month!

EXPANDING OUR INTERIOR DESIGN STUDIO



We're excited to welcome our new interior designer, **Samantha Jones** to our team.

With a passion for creating inspirational surroundings that promote the well-being of others and the environment, Samantha utilizes her skills to provide a balance between designing functional and creative spaces.

Samantha approaches interior design by understanding her client's wants and needs and guiding them with her expertise while focusing on the details that bring the space together as a whole. Samantha is a graduate of Kent State University with a Bachelor of Arts in Interior Design.

photo ©2015 [Jan Shergalis](#)

CLIENT CONGRATULATIONS!

Congratulations to our clients who received funding from the Ohio Housing Finance Authority (OHFA) for six new affordable housing projects!

Maple Knoll Meadows | Springdale, OH
Episcopal Retirement Homes Affordable Living LLC

Wellness Village of Midway | Canton, OH
Neighborhood Development Services, Inc.

Hough Heritage | Cleveland, OH
Cleveland Housing Network, Inc.

Senior Homes of Findley | Findlay, OH
NRP Holdings LLC

Career Gateway Homes | Columbus, OH
NRP Holdings LLC

Proctor's Landing | Rome Township, OH
PIRHL

IN THE NEWS



Fresh Water Cleveland recently featured a story on our client WXZ Development Inc. on its expanding footprint of 32 luxury apartments in the University Circle neighborhood with their fourth residential project, 118 Flats - Oval, which complements its sister projects, 118 Flats - Circle and 118 Flats - Square, that our firm developed and designed. [Click here](#) to read the full article.

RDL Highlighted in Affordable Housing Finance Magazine

Affordable Housing Finance (AHF) Magazine asked several architects and developers to share their ideas for where they would get the most bang for the money if they had an extra \$2,500 to spend on an affordable housing project.

Find out what our president and founder Ron Lloyd said by [clicking here](#).

CLIENT SHOUT-OUT

"We've had the pleasure to work with David Parrish and his RDL team for 5+ years now. What stands out to me above all else is RDL's outstanding service level. The trust I've developed with RDL leaves me with the confidence that I can go to them for just about anything and soon thereafter we will achieve an excellent outcome."

People / Places / Possibilities

RDlarchitects.com

16102 Chagrin Blvd., Suite 200 | Cleveland, Ohio 44120

p 216.752.4300 | f 216.752.4301